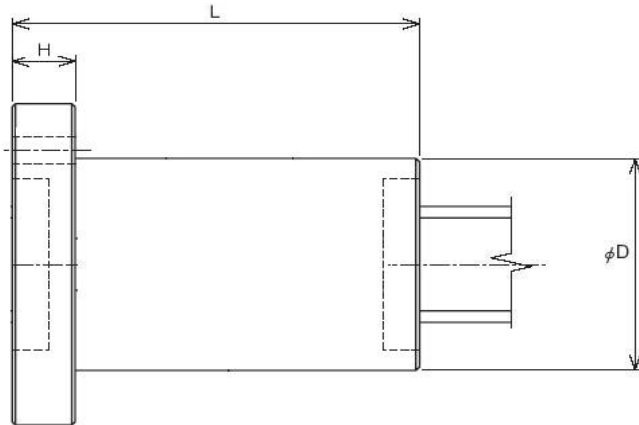




HIGH LOAD BALLSCREWS



High load capacity ball screws have proven themselves in injection molding machines, presses, custom actuators and casting machines. The demonstrated capability of KORTA High Load Ball Screws has been so favorable that they are now considered in many applications where hydraulics are used offering a better controlled and green friendly solution to linear motion. When replacing a hydraulic actuator with a KORTA High Load Ball Screw, one finds that design is much more straight forward, system efficiency is improved, maintenance is reduced, and there are no more oil leaks on the floor. High load technology has evolved over the years by continuous improvement in the design, using large ball diameters, load sharing over a large number of circuits, utilization of special materials and surface treatments. To the end user this means that size for size KORTA High Load Ball Screws can offer double the dynamic capacities of conventional ball screws. Although typically high load applications are unique and custom in nature, Korta does offer a number of standard sizes.



High Speed and Loads: KORTA produces special products combining the best of both high speed and heavy load designs, which have met the needs of some of the world's most demanding applications. Please contact us for any enquiry.

Nominal Ø	Lead	Ball Ø	Nº circuits	C (kN)	Co (kN)	L(l)	D	H
63	20	15,88	8	445	1055	230	125	25
63	20	15,88	9	492.5	1187	250	125	25
63	20	15,88	10	540	1319	270	125	25
80	20	15,88	8	507.7	1328	240	140	30
80	20	15,88	9	561.8	1494	260	140	30
80	20	15,88	10	616	1660	280	140	30
80	25	19,04	8	650	1648	295	150	30
80	25	19,04	9	719.2	1854	320	150	30
80	25	19,04	10	780.6	2039	345	150	30
100	20	15,88	8	576.5	1692	240	160	30
100	20	15,88	9	638	1904	260	160	30
100	20	15,88	10	699.5	2115	280	160	30
100	25	19,04	8	731.9	2041	295	170	30
100	25	19,04	9	810	2296	320	170	30
100	25	19,04	10	879	2526	345	170	30

(l) Minimum nut length with with w ipers. Without flange L=L-H+10.